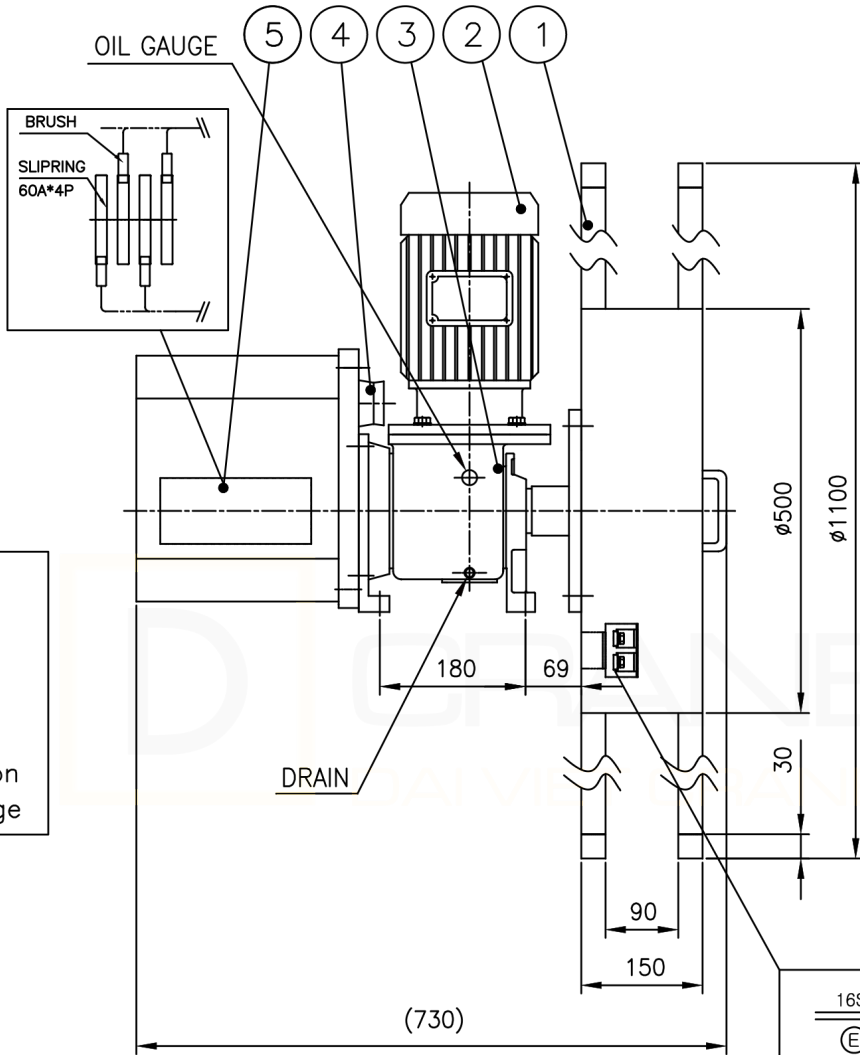
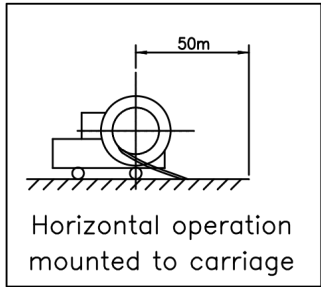
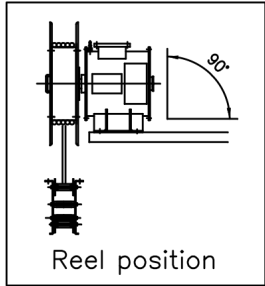
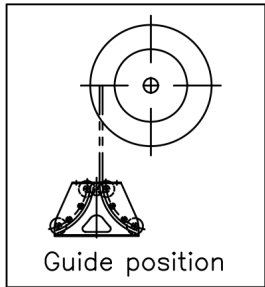
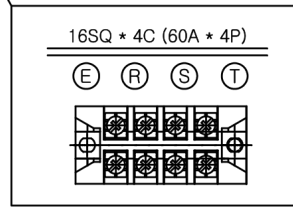
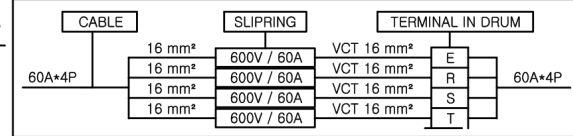
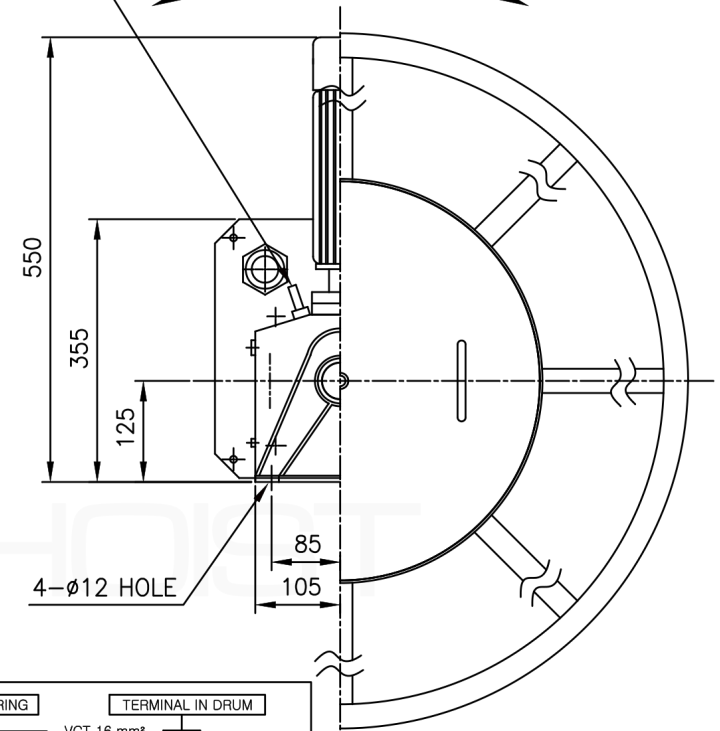


MARK	REVISIONS NO	REASONABLE RVISIONS	DATE	DWN	APVD



TORQUE ADJUSTOR  
OIL INJECT HOLE

CABLE TAKE OUT



**SPECIFICATION**

- |                                  |                              |                          |   |
|----------------------------------|------------------------------|--------------------------|---|
| 1. Cable                         | o PNCT 16sq x 4c             | o Size : approx. 25.2 mm | 5. Power Source : AC 380V, 3ph, 50Hz                      |
|                                  | o Weight : approx. 1.16 kg/m |                          | 6. Slip Ring : 60A x 4P                                   |
|                                  | o Length : 60 M              |                          | 7. Paint Color : MUNSELL No. 7.5BG 6/1.5 (Out Door-80um ) |
| 2. Winding Length : 50 M         |                              |                          | 8. Setting Height : Max. 2.0 m from G.L.                  |
| 3. Winding Speed : max. 25 M/MIN |                              |                          | 9. Q' ty : 1 Set  |
| 4. Winding Torque : 3 Kg.m       |                              |                          |   |

5	SLIP RING	C3771	4		
4	CONNECTOR	-	1		
3	REDUCER	-	1		
2	MOTOR	SIEMENS	1	0.75KW	
1	DRUM	SPHC	1		
ITEM 순번	PARTS NO. 품 번	PART NAME 품 명	MATERIAL 재 질	Q'TY 수량	REMARKS 비 고
PROJECTION		DIMENSIONS		SCALE	MODEL
3rd ANGLE		METRIC (mm)		1 : 1	SF1-1660-4
CUSTOMER		VNID		PART NAME	
MODEL COLOR		7.5BG 6/1.5		PART NO.	
DRAWING		DESIGN	CHECK	APPROVAL	
SIGN		S.S.J			
DATE		2017.4.10			
			<b>KOREEL</b>		
SAMKOOK INDUSTRIAL CO., Ltd					